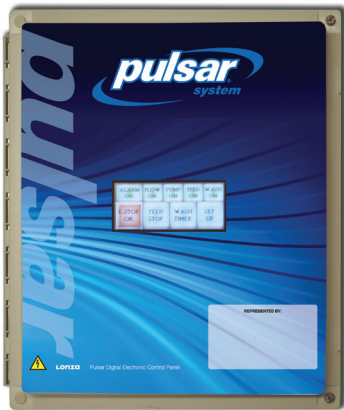




chlorination evolved



**45 140 500 FEEDERS**  
**NEW DESIGN HIGH EFFICIENCY**

Made in the U.S.A.



# chlorination evolved

## **New design! Highly efficient!**

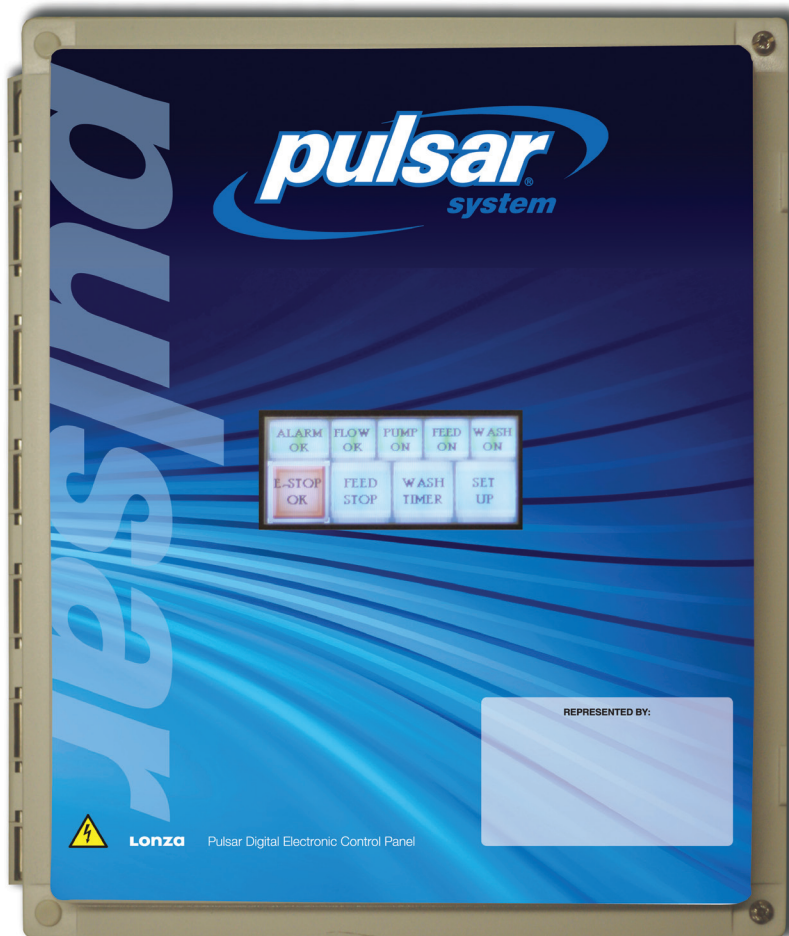
- ▶ Based on feedback from customers
- ▶ PLC driven control box with touchscreen controls
- ▶ Booster pump control option reduces energy consumption.
- ▶ Improved serviceability and reduced maintenance
- ▶ Improved carbon footprint
- ▶ Automated cleaning features
- ▶ Downstream Venturi injection

**DESIGNED WITH *CUSTOMER FEEDBACK***



chlorination **evolved**

# CONTROL BOX



- ▶ PLC based
- ▶ Touchscreen interface
- ▶ USB port for updating software and transferring data to computer
- ▶ Controls booster pump for optimal performance and efficiency
- ▶ Calculates individual pool/spa LSI

# *Pulsar Feeders 45, 140, 500*

## *NEW DESIGN HIGH EFFICIENCY*

**W**ith the Pulsar® System chlorinator remarkable water clarity color and sparkle are as easy to achieve as they are to enjoy. The Pulsar System reduces the hazards of chlorine gas and liquid bleach, protects plaster and equipment and reduces chloramine odors . The Pulsar feeder chlorinates, removes organics and metals, boosts hardness and shock treats, all in one simple process. Pool water that's balanced using the Pulsar System is clean and clear with less hassle, leading to longer pool and equipment life.



## Model 45 Specifications

Chlorinator height ..... 31" [78.7cm]  
Chlorinator weight (full) ..... 55 lbs [24.9kg]  
Chlorinator weight (empty)..... 30 lbs [13.6kg]

### Capacity:

25 lbs [11.3kg] Pulsar® Plus Dry Chlorinator  
Briquettes (equivalent to 17 lbs [7.7kg]  
available chlorine)

### Feed Rate:

Pulsar® Plus Briquettes: 2-58 lbs  
[1.5-22.7kg] of Available Chlorine per day (Pool)  
[3-66kg] of Available Chlorine per day (Spa)

### Recommended Pool Size\*:

5,000-100,000 gallon [18,927-378,541 liter]  
un-stabilized<sup>1</sup>  
50,000-150,000 gallon [189,271-567,812 liter]  
stabilized<sup>1</sup>

\*Subject to local health codes

## Model 140 Specifications

Chlorinator height ..... 35" [88.9cm]  
Chlorinator weight (full) ..... 150 lbs [68.0kg]  
Chlorinator weight (empty)..... 50 lbs [22.7kg]

### Capacity:

100 lbs [45.4kg] Pulsar® Plus Dry Chlorinator  
Briquettes (equivalent to 68 lbs [30.8kg]  
available chlorine)

### Feed Rate:

Pulsar® Plus Briquettes: 5-163 lbs  
[2.3-63.5kg] of Available Chlorine per day

### Recommended Pool Size\*:

15,000-200,000 gallon [56,781-757,082 liter]  
un-stabilized<sup>1</sup>  
50,000-600,000 gallon [189,271-2,271,247 liter]  
stabilized<sup>1</sup>

\*Subject to local health codes

## Model 500 Specifications

Chlorinator height .....40" [101.6cm]  
Chlorinator weight (full) ..... 465 lbs [210.9kg]  
Chlorinator weight (empty)..... 165 lbs [74.8kg]

### Capacity:

300 lbs [136.1kg] Pulsar® Plus Dry Chlorinator  
Briquettes (equivalent to 204 lbs [92.5kg]  
available chlorine)

### Feed Rate:

Pulsar® Plus Briquettes: 25-486 lbs  
[11.4-266.8kg] of Available Chlorine per day

### Recommended Pool Size\*:

50,000-600,000 gallon [189,250-2,271,000 liter]  
un-stabilized<sup>1</sup>  
100,000-1,600,000 gallon [378,500-6,056,000 liter]  
stabilized<sup>1</sup>

\*Subject to local health codes





### **Patented Spray Technology:**

- ▶ Consistent high strength solution of 2.0% AvCl on demand
- ▶ Uniform dissolution of briquette bed
- ▶ Uses 68% AvCl Pulsar briquettes

### **Improved Serviceability:**

- ▶ All internal components easily accessible
- ▶ All external components mounted in front
- ▶ Removable solenoid assembly
- ▶ Quick disconnect fittings
- ▶ Common components across feeder line

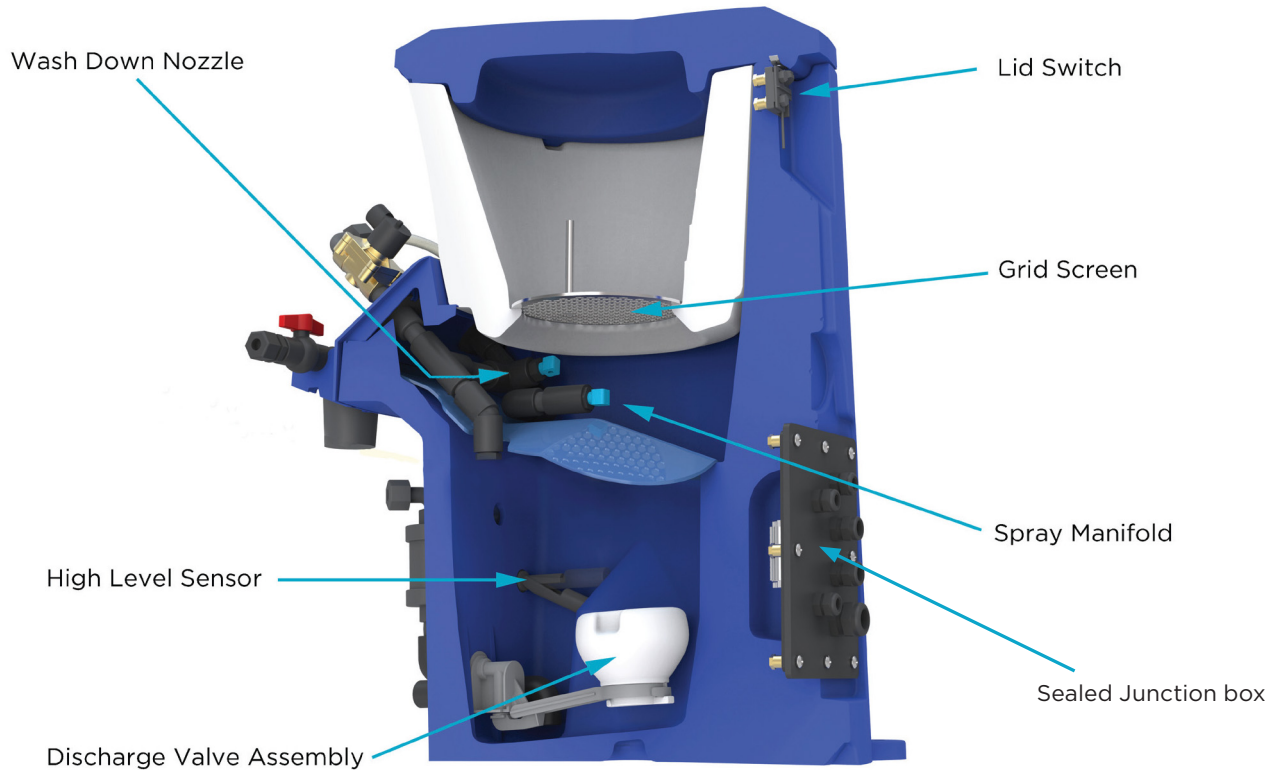
### **Less Maintenance:**

- ▶ Automated wash down logic
- ▶ Optional dilution feature
- ▶ Improved discharge valve
- ▶ Minimal solution reservoir

### **Improved Equipment Safety:**

- ▶ Lid switch
- ▶ Overflow prevention system
- ▶ Sliding hopper (P500 only)
- ▶ Seismic zone compliant

# Pulsar System



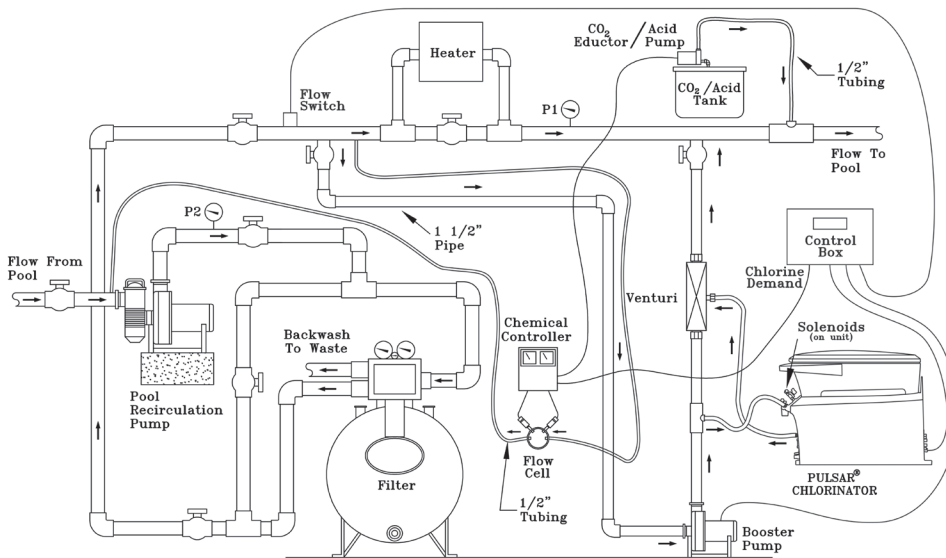
**Cut-away view:** The new design of the Pulsar® family of feeders has many new features to decrease maintenance and increase reliability. The water from the pool enters the Pulsar® Chlorinator via the inlet port. The spray manifold then distributes the water onto the briquette grid creating a chlorinated solution. The chlorinated solution falls into the discharge tank and is discharged into the pool recirculation system by the evacuation system. Water flow in the unit is designed to remove residue from the chlorinator base. A smaller reservoir with an updated discharge valve arm allows for a more reliable and accurate dosing method. The automatic wash down nozzles and the well agitator nozzle spray after the unit is done feeding to clean the inside of the Pulsar feeders. This is controlled by the Pulsar Control Box logic.

chlorination evolved

# Pulsar® Plus Briquettes

## Chemical Properties

	Minimum	Maximum
Available chlorine (% by weight)	65.0	-
Water (% by weight)	4.0	8.5
Iron (% by weight)	-	0.05
Oxides, heavy metals & AL (% by weight)	-	0.5
Scale inhibitor (% by weight)	0.4	1.0
Weight (grams)	6.5	7.5
Dimensions (mm)	Approx. 32 x19x13	



FOR MORE INFORMATION  
800-478-5727

1200 Bluegrass Lakes Parkway | Alpharetta, GA 30004  
www.lonzawatertreatment.com

Pulsar and the design logo are trademarks of LONZA or its affiliates.

**Lonza**